





 Piazza dell'Esquilino, 1
00185, Roma (RM)
 +39 06 45774500
 romemonti_events@hilton.com
 www.romemonti.doubletreebyhilton.com

 **133 camere** | rooms
 **3 sale meeting** | meeting rooms
 **60 ospiti** | guests



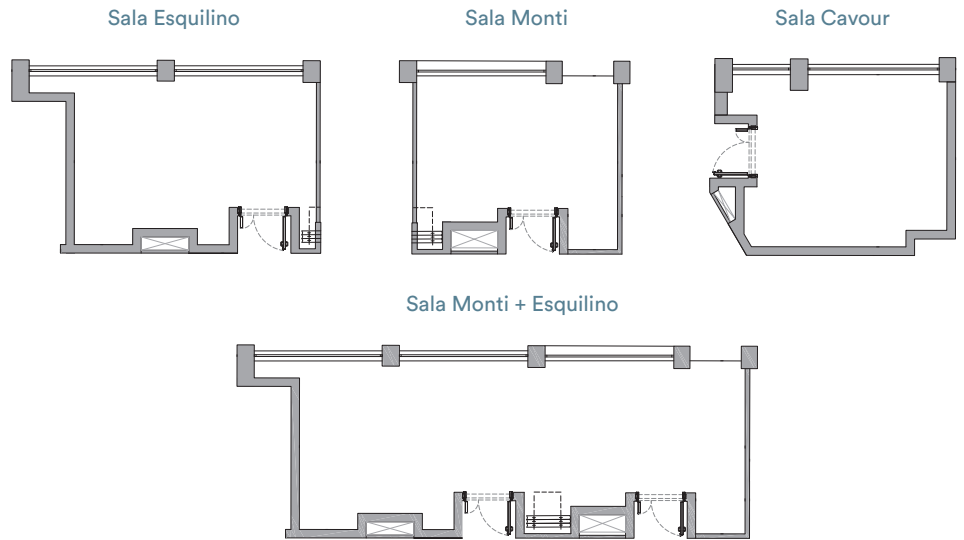
DoubleTree by Hilton Rome Monti offre uno spazio meeting comprensivo di 3 sale meeting modulari che possono ospitare massimo 60 persone, tutte con luce naturale, perfette per piccoli o medi eventi e capaci di offrire la flessibilità di cui i nostri ospiti hanno bisogno.

Il nostro centro congressi dispone di attrezzature audiovisive digitali e moderne, per assolvere ad ogni funzione, oltre che di un break hub, comoda area lounge dedicata alle pause.

DoubleTree by Hilton Rome Monti offers a meeting space composed of 3 modular meeting rooms that can accommodate up to 60 people, all with natural light, perfect for small or medium events and able to offer the flexibility our guests need.

Our conference center offers digital and modern audiovisual equipment, to meet every need, as well as a break hub, a comfortable lounge area dedicated to breaks.

-  **Wi-Fi gratuito**
Free Wi-Fi
-  **Cancelleria per i partecipanti**
Office stationery for participants
-  **Bottiglie d'acqua gratuita per i partecipanti**
Free water bottles for participants
-  **Assistenza tecnica su richiesta**
Technical assistance on request
-  **Servizio hostess su richiesta**
Hostess service on request
-  **Servizio di traduzione su richiesta**
Translation service on request
-  **Lavagna a fogli mobili su richiesta**
Flipchart on request
-  **Servizi ristorativi e Coffee break su richiesta**
Catering services and Coffee break on request
-  **Pc, TV, slide pointer su richiesta**
Pc, TV, slide pointer on request
-  **Guardaroba su richiesta**
Wardrobe on request
-  **Registrazioni audio-video su richiesta**
Audio and video recording on request
-  **Servizio fax su richiesta**
Fax service on request
-  **Video conferenze su richiesta**
Video conferencing available on request



SALE MEETING ROOMS	METRI / METERS				DISPOSIZIONE / SETUP			
	MQ	DIMENSIONI SIZE	ALTEZZA HEIGHT	LUCE NATURALE	CLASSROOM	THEATER	BOARDROOM	CABARET
Sala Cavour	26	4.30*5.40	3.10	Si	-	-	10 pax	-
Sala Esquilino	31	4.27*6.67	3.10	Si	12 pax	25 pax	10 pax	-
Sala Monti	27	4.23*5.55	3.10	Si	8 pax	22 pax	8 pax	-
Sala Monti + Esquilino	57	4.27*12.22	3.10	Si	24 pax	50 pax	18 pax	20 pax

Contatto corporate sales@hnh.it | Contatto MICE romemonti_sales@hilton.com | +39 06 45774500